

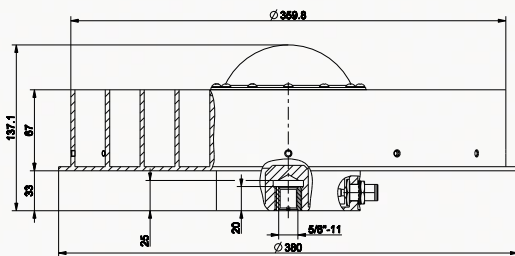
# RingAnt-DM

Reference Station antenna with choke ring RingAnt-DM is the standard Dorne-Margolin antenna element mounted on standard JPL Choke Ring. RingAnt-DM can track GPS, GLONASS and Galileo signals.

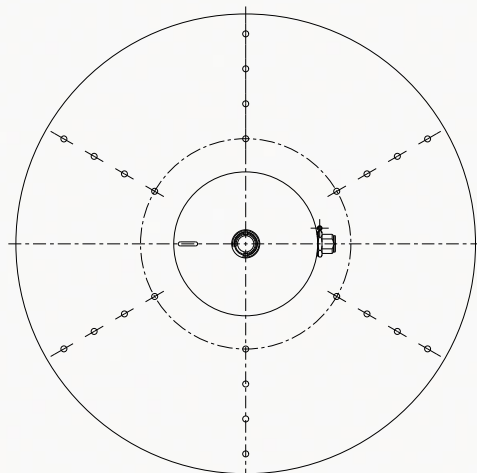
The RingAnt-DM antenna is designed for highly efficient multipath reduction and is recommended for use in GNSS reference networks, infrastructure monitoring, high precision geodetic surveying, or machine control applications.

# RINGANT-DM

<b>Signal</b>	
Capability	L1 GPS/GLONASS/Galileo L2 GPS/GLONASS L5 GPS E5 Galileo E6 Galileo
Frequency	1565~1610 MHz 1165~1300 MHz
<b>Electrical</b>	
Antenna Gain	1565~1610 MHz - 6.0 dB typ. 1165~1300 MHz - 5.0 dB typ.
Axial Ratio	3.0 dB max.
Output Impedance	50 Ohm
VSWR	2.0 : 1
LNA gain	32±2 dB
Noise Figure	1565~1610 MHz - 2.2 dB typ. 1165~1300 MHz - 1.7 dB typ.
DC voltage	3.0~15.0VDC 45mA@5.0V typ.
<b>Environmental</b>	
Operating Temperature	-45°C ~ +85°C
Storage Temperature	-50°C ~ +85°C
Humidity	Waterproof
<b>Mechanical</b>	
Antenna type	Omnidirectional, hemispherical
Connector	N-type
Weight	4.4 kg
Dimensions	Ø 380 mm; H=138 mm
Enclosure	Radome: Fiberglass Base: Aluminum
Mounting	5/8-11 inches mount



\* All dimensions are in mm



Specifications are subject to change without notice.



**JAVAD GNSS**  
[www.javad.com](http://www.javad.com)

